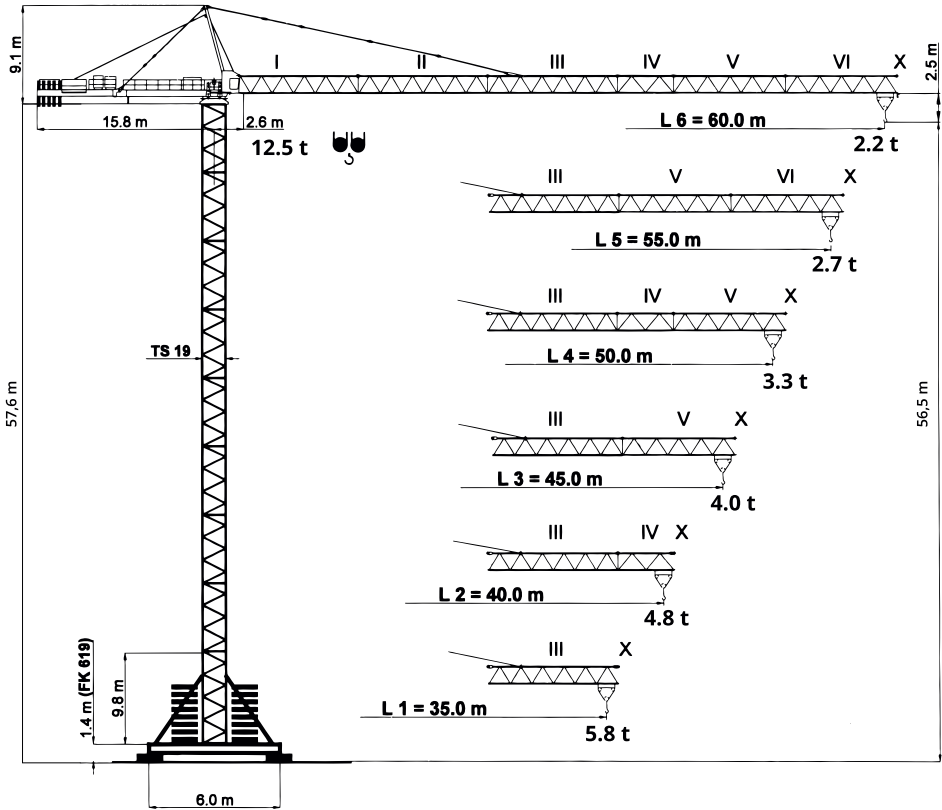


12.5
tony

PEINER SK 186/1

Wersje montażowe

CORLEONIS



CE DIN 15018 H1/B3
BGL 2125 0180



Zeskanuj kod
i pobierz kartę na telefon

12.5
tony

PEINER
SK 186/1



Tabela udźwignów

i		SK 186/1																		
Wysięgnik		Udźwig max	6,3 t				12,5 t				Wysięg (m) i udźwig (t)									
m	m	12,5 t	18	20	22	26	28	30	32	35	38	40	43	45	48	50	53	55	60	
L6	60,0	2,6 - 14,3 m	9,61	8,51	7,63	6,28	5,75	5,30	4,91	4,40	3,98	3,74	3,41	3,22	2,97	2,81	2,60	2,48	2,20	
L5	55,0	2,6 - 15,2 m	10,31	9,14	8,20	6,76	6,20	5,72	5,30	4,76	4,31	4,05	3,70	3,50	3,22	3,06	2,83	2,70		
L4	50,0	2,6 - 16,1 m	11,01	9,77	8,76	7,23	6,64	6,13	5,68	5,11	4,63	4,35	3,99	3,77	3,47	3,30				
L3	45,0	2,6 - 16,9 m	11,62	10,31	9,25	7,65	7,02	6,49	6,01	5,41	4,91	4,62	4,23	4,00						
L2	40,0	2,6 - 17,5 m	12,09	10,72	9,62	7,95	7,30	6,74	6,25	5,63	5,10	4,80								
L1	35,0	2,6 - 17,8 m	12,40	11,01	9,88	8,17	7,51	6,94	6,44	5,80										

Wysięgnik	L1	L2	L3	L4	L5	L6
Przeciwwaga	10,45	12,45	13,60	14,60	15,60	16,60
BG (t)	1 x 4,15	3 x 4,15	1 x 4,15	2 x 4,15	3 x 4,15	4 x 4,15
	2 x 3,15		3 x 3,15	2 x 3,15	1 x 3,15	

Wysięgnik	L1	L2	L3	L4	L5	L6
Przeciwwaga	10,45	12,45	13,60	14,60	15,60	16,60
BG (t)	2 x 3,15		3 x 3,15	2 x 3,15	1 x 3,15	
	1 x 4,15	3 x 4,15	1 x 4,15	2 x 4,15	3 x 4,15	4 x 4,15

12.5
tony

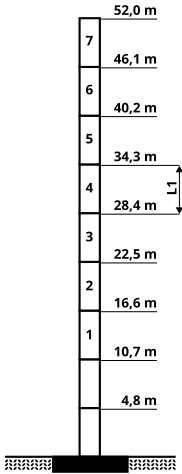
PEINER SK 186/1

Wieża Wersje



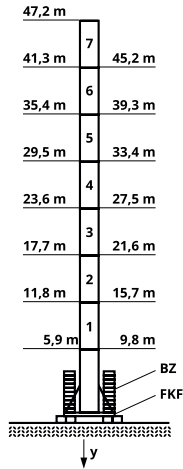
A

HH



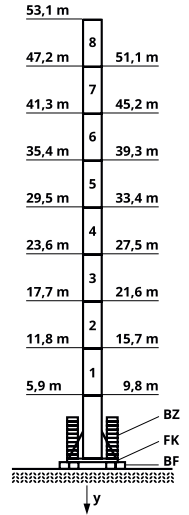
E

519 HH 619

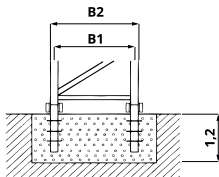


F

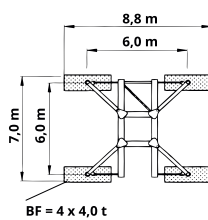
519 HH 619



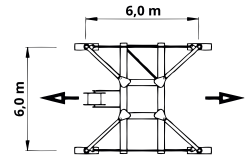
FF 19



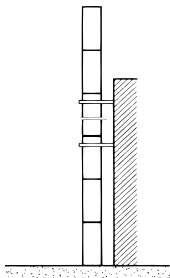
FK 619



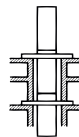
FKF 619



D

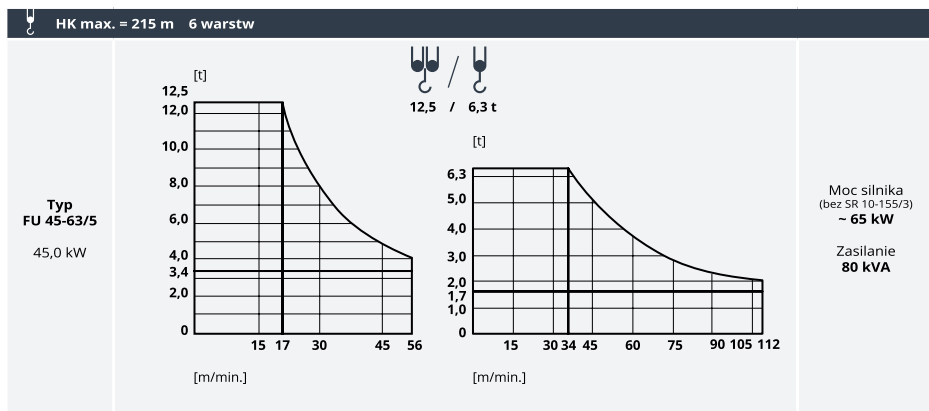


B



Na zamówienie

FU 4-125/4		$V = 0 \rightarrow 80 \text{ m/min.}$	4,0 kW	400 V
SR 10-155/3		$V = 0 \rightarrow 25 \text{ m/min.}$	2 x 10,0 kW	50 Hz
K WB 80/4		$V = 0 \rightarrow 0,75 \text{ min}^{-1}$	2 x 7,0 kW	3 Ph



HK max. = 215 m 6 warstw

<p>Typ SR WB 66-63/4F</p> <p>66,0 kW</p>		▶ 112 m/min.	2 500 kg		▶ 56 m/min.	3 600 kg	<p>Moc silnika (bez SR 10-155/3) ~ 55 kW</p> <p>Zasilanie 100 kVA</p>
		▶ 70 m/min.	4 200 kg		▶ 35 m/min.	5 600 kg	
		▶ 45 m/min.	6 300 kg		▶ 23 m/min.	12 500 kg	
		▶ 28 m/min.			▶ 14 m/min.		