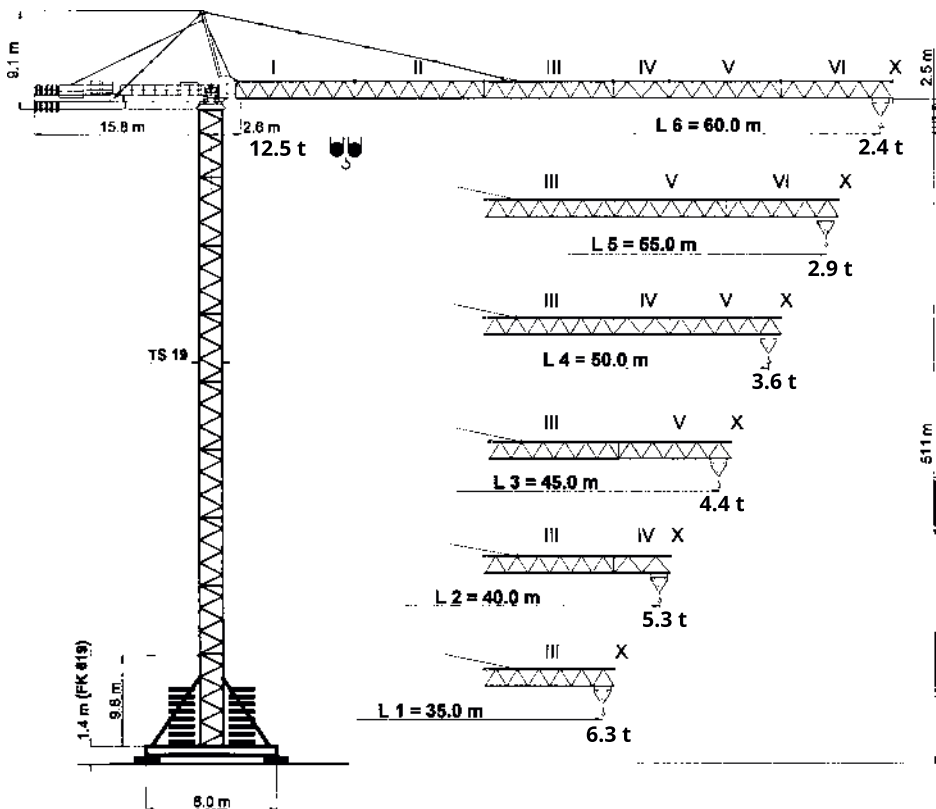


12.5
tony

PEINER
SK 206/1

CORLEONIS

Wersje montażowe



CE DIN/FEM
1.001 A3



Zeskanuj kod
i pobierz kartę na telefon

górnobrotowe o wysięgniku poziomym

12.5
tony**PEINER
SK 206/1**
CORLEONIS**Tabela udźwígów**

1		SK 206/1																	
Wysięgnik	Udźwig max	6,3 t				12,5 t		Wysięg (m) i udźwig (t)											
m	12,5 t	18	20	22	26	28	30	32	35	38	40	43	45	48	50	53	55	60	
L6 60,0	2,6 - 15,3 m	11,84	9,17	8,22	6,77	6,21	5,72	5,30	4,76	4,31	4,04	3,70	3,49	3,22	3,05	2,83	2,70	2,40	
L5 55,0	2,6 - 16,1 m	12,50	9,75	8,74	7,21	6,61	6,10	5,65	5,08	4,60	4,33	3,96	3,74	3,45	3,28	3,04	2,90		
L4 50,0	2,6 - 17,2 m	12,50	10,54	9,46	7,82	7,18	6,63	6,15	5,54	5,03	4,73	4,33	4,10	3,79	3,60				
L3 45,0	2,6 - 18,3 m	12,50	11,28	10,12	8,37	7,69	7,10	6,59	5,93	5,39	5,07	4,65	4,40						
L2 40,0	2,6 - 18,9 m	12,50	11,75	10,55	8,73	8,02	7,41	6,88	6,20	5,63	5,30								
L1 35,0	2,6 - 19,1 m	12,50	11,93	10,71	8,86	8,15	7,53	6,99	6,30										

WERSJA F z centralnym blokiem balastu i blokiem podstawy BZ + BF

HH	(m)	5,9	11,8	17,7	23,6	29,5	35,4	41,3	47,2	53,1
FK 519	(t)	58,2	58,2	58,2	58,2	68,2	68,2	78,2	98,2	118,2
HH	(m)	9,8	15,7	21,6	27,5	33,4	39,3	45,2	51,2	
FK 619	(t)	48,2	48,2	48,2	48,2	48,2	58,2	68,2	78,2	

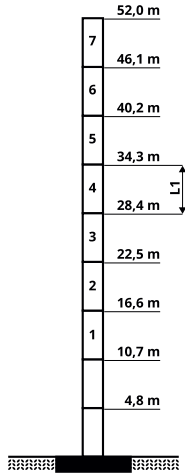
WERSJA E z centralnym blokiem balastu BZ

HH	(m)	5,9	11,8	17,7	23,6	29,5	35,4	41,3	47,2
FKF 519	(t)	52,2	62,2	62,2	62,2	72,2	72,2	82,2	92,2
HH	(m)	9,8	15,7	21,6	27,5	33,4	39,3	45,2	
FKF 619	(t)	42,2	42,2	42,2	42,2	52,2	52,2	62,2	

Wysięgnik	L1	L2	L3	L4	L5	L6
Przeciwwaga BG (t)	10,45	12,45	13,60	14,60	15,60	16,60
	2 x 3,15		3 x 3,15	2 x 3,15	1 x 3,15	
	1 x 4,15	3 x 4,15	1 x 4,15	2 x 4,15	3 x 4,15	4 x 4,15

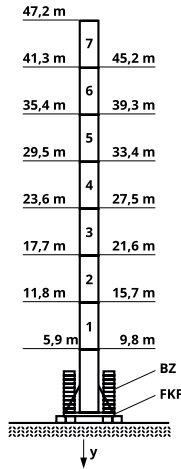
A

HH



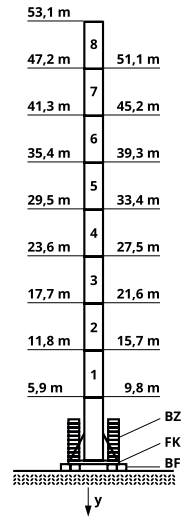
E

519 HH 619

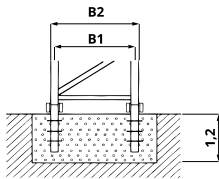


F

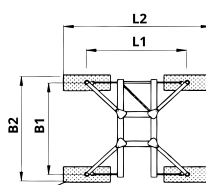
519 HH 619



FF 19

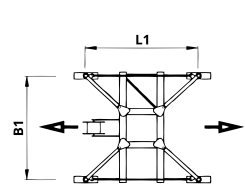


FK



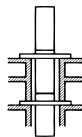
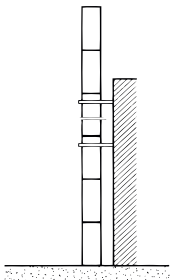
BF = 4 x 4,0 t

FKF



D




B

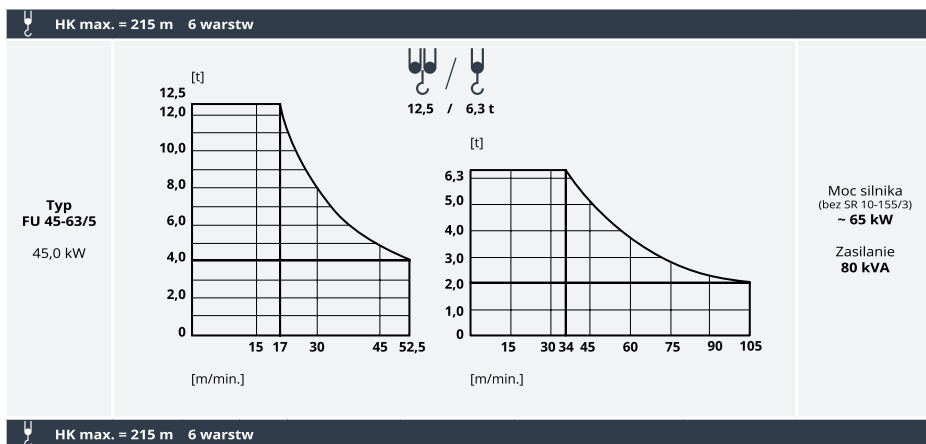



Na zamówienie








	B1	B2	L1	L2	y / ●	y / ⚡
	m				kN	
FK 519	5,00	6,05	5,05	7,85	836	905
FK 619	6,00	7,00	6,00	8,80	674	710
FKF 519	5,05		5,05		808	743
FKF 619	6,00		6,00		661	592
TS 19,1	1,90	2,06	5,9			
TS 19,2	1,90	2,06	11,8			
TSV 19,1	1,90	2,06	5,9			
TSV 19	1,90	2,06	9,8			

● Czynny
⚡ Pozycja poza pracę

FU 4-125/4		$V = 0 \rightarrow 80 \text{ m/min.}$	4,0 kW	400 V
SR 10-155/3		$V = 0 \rightarrow 25 \text{ m/min.}$	2 x 10,0 kW	50 Hz
K WB 80/4		$V = 0 \rightarrow 0,75 \text{ min}^{-1}$	2 x 80 Nm	3 Ph



 HK max. = 215 m 6 warstw

<p>Typ SR WB 66-63/4F 66,0 kW</p> 	   		▶ 112 m/min.	2 500 kg		▶ 56 m/min.	5 000 kg	<p>Moc silnika (bez SR 10-155/3) ~ 80 kW</p> <p>Zasilanie 160 kVA</p>
			▶ 70 m/min.	4 200 kg		▶ 35 m/min.	8 400 kg	
			▶ 45 m/min.	6 300 kg		▶ 23 m/min.	12 500 kg	
			▶ 28 m/min.			▶ 14 m/min.		